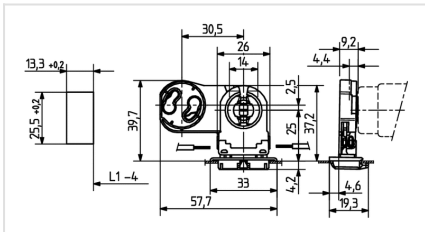




## 26.308.5125

Linear Fluorescent Lampholders: General Applications  
G13 (Medium Bi-Pin): Push-In Lampholders



**Color:** weiß  
**FC:** 50  
**Part no.:** 26.308.5125.50



18 AWG  
0,5 - 1,0 mm<sup>2</sup>



T 130

Tm 110



0,5 - 1,1

## Description

- With snap in foot and closed base, IP 40. With foot gasket IP 50.
- A pair of lampholders provides a lamp length tolerance compensation of 3 mm

**Product name:** Fluorescent lampholder G13

**LED type:** G13

**Farbe:** white

**Mounting method 1:** Snap-in foot 25.5 x 13.3 mm

**Material:** Housing: PC Rotor: PBT

**Rotor:** with

**cULus file no.:** E-92235

**Weight:** 9

**Approval:** cULus

**Front Test:** yes

**Lamp center:** 25

**Material thickness:** 0.5 - 1.1

**Protection class according to IEC:** IP 40

**Starter holder:** yes

**Starter position:** at the front

**T-Marking:** 130

**Top Test:** yes

**Wiring:** Side entry wiring

**Pkg.:** 500